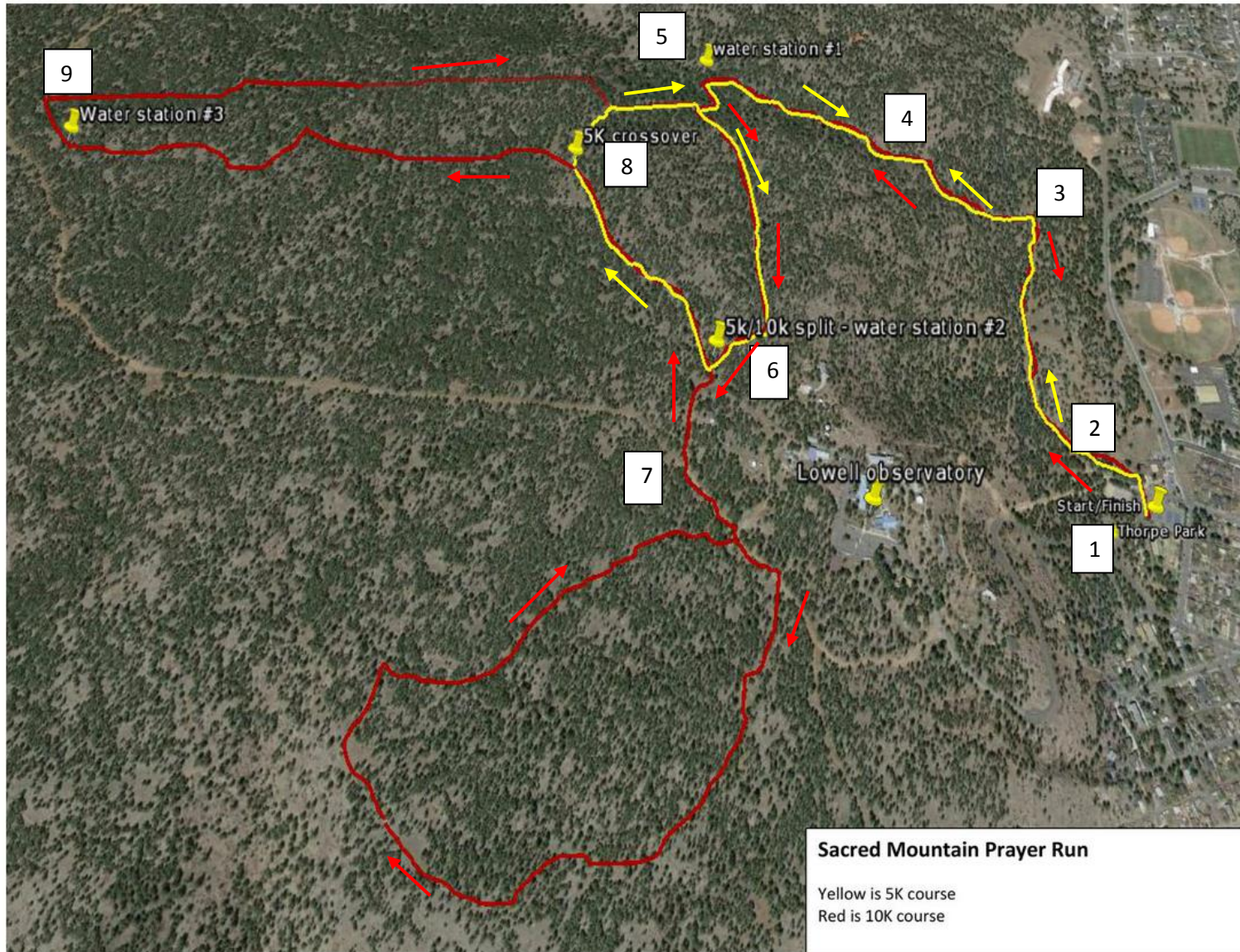


# Sacred Mountain Prayer Run Course Map



Repeater 146.980  
alternate simplex 146.480

Water truck to carry us to water station  
leaves tennis courts at 6:30AM  
Try to be at Thorpe Park by 6:00 AM if  
possible.

Race starts at 7:30

## Assignments

- 1 **Net Control** Erv & Kay
- 2 **Start/Finish** Diane, Janice (?)
- 3 **First Turn** Tom & Dawnelle
- 4 **Rocky Hill** Ken
- 5 **Water Station 1** Ron & Betty
- 6 **Water Station 2** Sandy
- 7 **Relay** Joe
- 8 **5K Crossover** Phil & Bobbie
- 9 **Water Station 3** Bob M